



4" JOINTER

MODEL H2801

PARTS LIST



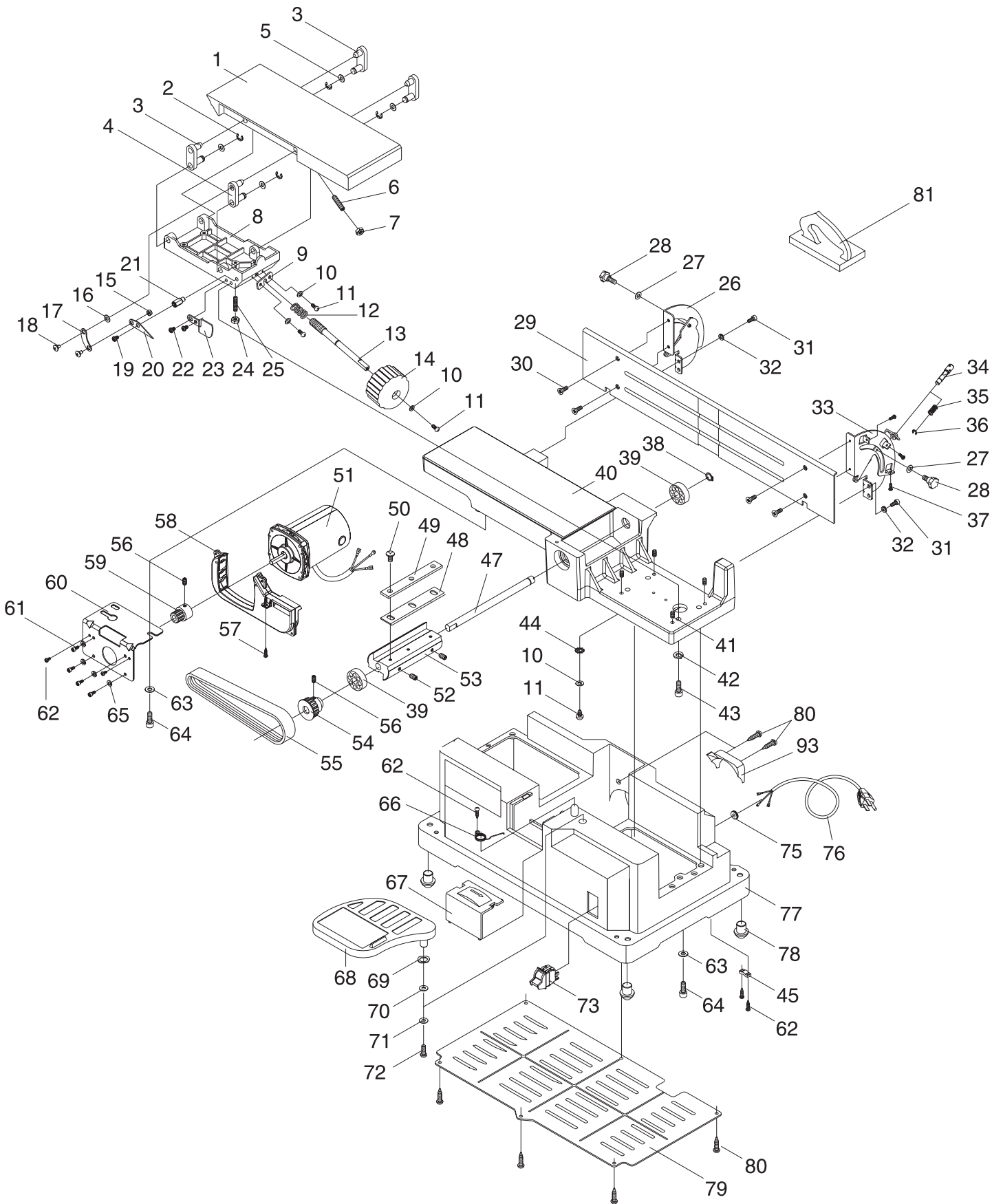
COPYRIGHT © NOVEMBER, 2001 BY GRIZZLY INDUSTRIAL, INC.

**WARNING: NO PORTION OF THIS MANUAL MAY BE REPRODUCED IN ANY SHAPE
OR FORM WITHOUT THE WRITTEN APPROVAL OF GRIZZLY INDUSTRIAL, INC.**

PRINTED IN TAIWAN

PARTS LIST DISCLAIMER

THIS PARTS LIST AND DRAWINGS REPRESENT THE CONFIGURATION OF THE MACHINE AS IT IS CURRENTLY BEING SHIPPED. THE MACHINE CONFIGURATION CAN CHANGE AS PRODUCT IMPROVEMENTS ARE INCORPORATED. IF YOU OWN AN EARLIER VERSION OF THE MACHINE, THIS PARTS LIST MAY NOT DEPICT YOUR MACHINE EXACTLY. CONTACT CUSTOMER SERVICE IF YOU HAVE ANY QUESTIONS ABOUT PART DIFFERENCES. PREVIOUS PARTS LIST VERSIONS ARE NOT AVAILABLE ONLINE.



REF	PART #	DESCRIPTION
01	PH2801001	INFEED TABLE
02	PH2801002	E-RING 6MM
03	PH2801003	BRACKET
04	PH2801004	BRACKET
05	PH2801005	FLAT WASHER M5
06	PH2801006	SETSCREW M5-.8 X 30
07	PH2801007	HEX NUT M5-.8
08	PH2801008	TABLE FRAME
09	PH2801009	SUPPORT PLATE
10	PH2801010	FLAT WASHER M6
11	PH2801011	PHLP HD SCR M4-.7 X 10
12	PH2801012	SPRING
13	PH2801013	ELEVATION SCREW
14	PH2801014	KNOB
15	PH2801015	HEX NUT M4-.7
16	PH2801016	FLAT WASHER M6
17	PH2801017	BRACKET
18	PH2801018	SCREW
19	PH2801019	PHLP HD SCR M5-.8 X 10
20	PH2801020	POINTER ASSY
21	PH2801021	BOLT
22	PH2801022	PHLP HD SCR M5-.8 X 8
23	PH2801023	SCALE
24	PH2801024	HEX NUT M6-1.0
25	PH2801025	SETSCREW M6-1.0 X 30
26	PH2801026	LEFT TRUNNION
27	PH2801027	FLAT WASHER M6
28	PH2801028	KNOB
29	PH2801029	FENCE
30	PH2801030	COSUNK SCR M5-.8 X 10
31	PH2801031	CAP SCREW M5-.8 X 12
32	PH2801032	LOCK WASHER M5
33	PH2801033	RIGHT TRUNNION
34	PH2801034	PLUNGER
35	PH2801035	SPRING
36	PH2801036	E-RING 3MM
37	PH2801037	PHLP HD SCR M4-.7 X 10
38	PH2801038	RETAINING RING 10M
39	PH2801039	BEARING 6200ZZ
40	PH2801040	OUTFEED TABLE

REF	PART #	DESCRIPTION
41	PH2801041	SETSCREW M6-1.0 X 16
42	PH2801042	LOCK WASHER M6
43	PH2801043	CAP SCREW M6-1.0 X 16
44	PH2801044	TOOTH WASHER
45	PH2801045	POWER CORD
47	PH2801047	SHAFT
48	PH2801048	KNIFE
49	PH2801049	KNIFE CLAMP
50	PH2801050	BTN HD SCR M6-1.0 X 12
51	PH2801051	MOTOR ASSY
52	PH2801052	SETSCREW M6-1.0 X 12
53	PH2801053	CUTTERHEAD
54	PH2801054	DRIVE PULLEY
55	PH2801055	TIMING BELT 3/8" X 130XL
56	PH2801056	SETSCREW M6-1.0 X 6
57	PH2801057	SHT MTL SCREW M4 X 6
58	PH2801058	DUST PORT
59	PH2801059	MOTOR PULLEY
60	PH2801060	MOTOR BRACKET
61	PH2801061	CAP SCREW 5/32" X 3/8"
62	PH2801062	SHT MTL SCREW M4 X 10
63	PH2801063	FLAT WASHER M6
64	PH2801064	CAP SCREW M6-1.0 X 16
65	PH2801065	LOCK WASHER M6
66	PH2801066	TORSION SPRING
67	PH2801067	ACCESS TAB
68	PH2801068	KNIFE GUARD
69	PH2801069	WAVY WASHER M10
70	PH2801070	BUSHING
71	PH2801071	FLAT WASHER M6
72	PH2801072	SCREW M5-.8 X 8
73	PH2801073	SWITCH
75	PH2801075	WIRE CLIP
76	PH2801076	POWER CORD
77	PH2801077	BASE
78	PH2801078	FOOT PAD
79	PH2801079	COVER
80	PH2801080	SHT MTL SCREW M4 X 12
81	PH2801081	PUSH BLOCK
93	PH2801093	PLATE