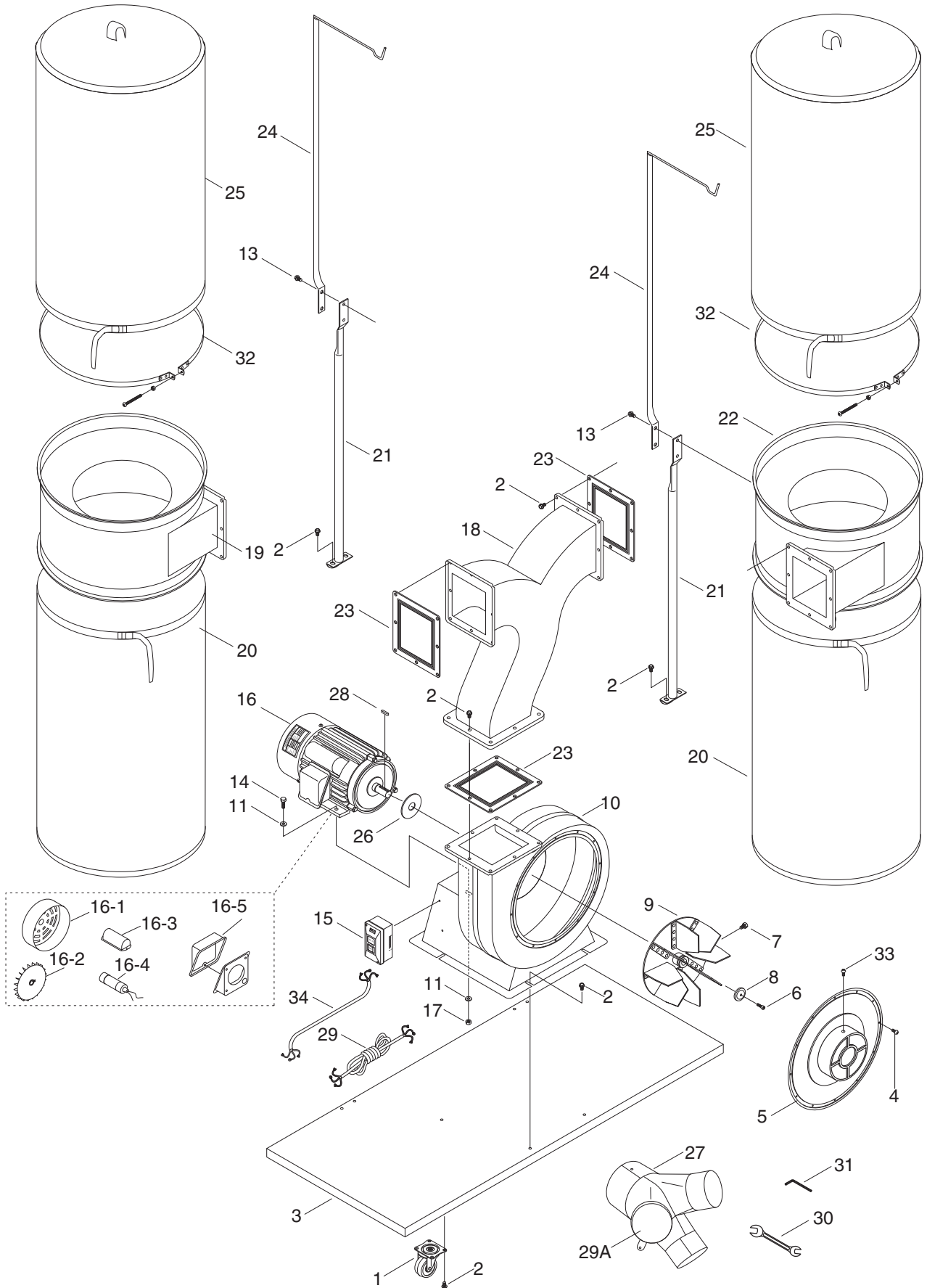


# Parts Breakdown

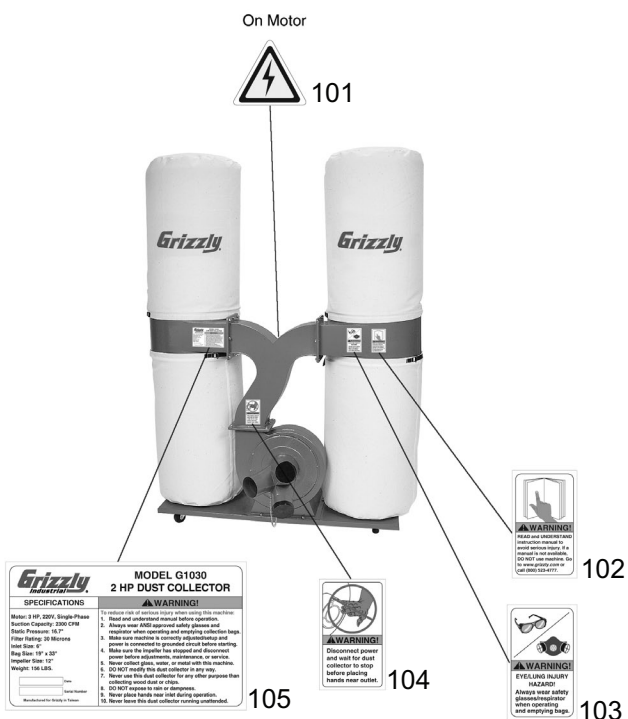


# Parts List

REF	PART #	DESCRIPTION
1	P1028001	CASTER
2	PFB01	FLANGE BOLT 5/16"-18 X 1/2"
3	P1030003	BASE PLATE
4	PS06	PHLP HD SCREW 10-24 X 3/8"
5	P1030005	INLET COVER
6	PSB121M	CAP SCREW M6-1 X 20 (LH)
7	PB09	HEX BOLT 5/16"-18 X 1/2"
8	P1028009	SPECIAL WASHER
9	P1029010	TURBO FAN
10	P1028011	COLLECTOR BODY
11	PW07	FLAT WASHER 5/16"
13	PFB01	FLANGE BOLT 5/16"-18 X 1/2"
14	PB03	HEX BOLT 5/16"-18 X 1"
15	PSW04	SWITCH
16	P1030016	MOTOR 3HP 220V 1PH
16-1	P1030016-1	MOTOR FAN COVER
16-2	P1030016-2	MOTOR FAN
16-3	P1030016-3	CAPACITOR COVER
16-4	P1030016-4	CAPACITOR 500M 125V 1-3/4 X 3-3/8
16-5	P1030016-5	JUNCTION BOX

REF	PART #	DESCRIPTION
17	PN02	HEX NUT 5/16"-18
18	P1030018	OUTLET
19	P1030019	LEFT COLLECTOR
20	G4996	DUST COLL BAG, LOWER
21	P1028023	COLLECTOR SUPPORT
22	P1030022	RIGHT COLLECTOR
23	P1028028	PACKING
24	P1028026	UPPER BAG SUPPORT
25	G1027	DUST COLL BAG, UPPER
26	P1028025	GASKET
27	P1030027	INLET
28	PK28M	KEY 7 X 7 X 29
29	PWRCRD220L	POWER CORD, 220V, LONG
29A	P1029029A	INLET CAP
30	PWR1012	WRENCH 10 X 12
31	PAW05M	HEX WRENCH 5MM
32	G3707	68" BAND CLAMP
33	PS06	PHLP HD SCREW 10-24 X 3/8"
34	PWRCRD220S	POWER CORD, 220V, SHORT

# Labels Breakdown & List



REF	PART #	DESCRIPTION
101	PLABEL-14	ELECTRICITY LABEL
102	PLABEL-12A	READ MANUAL LABEL
103	PLABEL-57	RESPIRATOR GLASSES LABEL
104	PLABEL-59	NO HANDS NEAR INLET LABEL
105	P1030105	MACHINE ID LABEL

