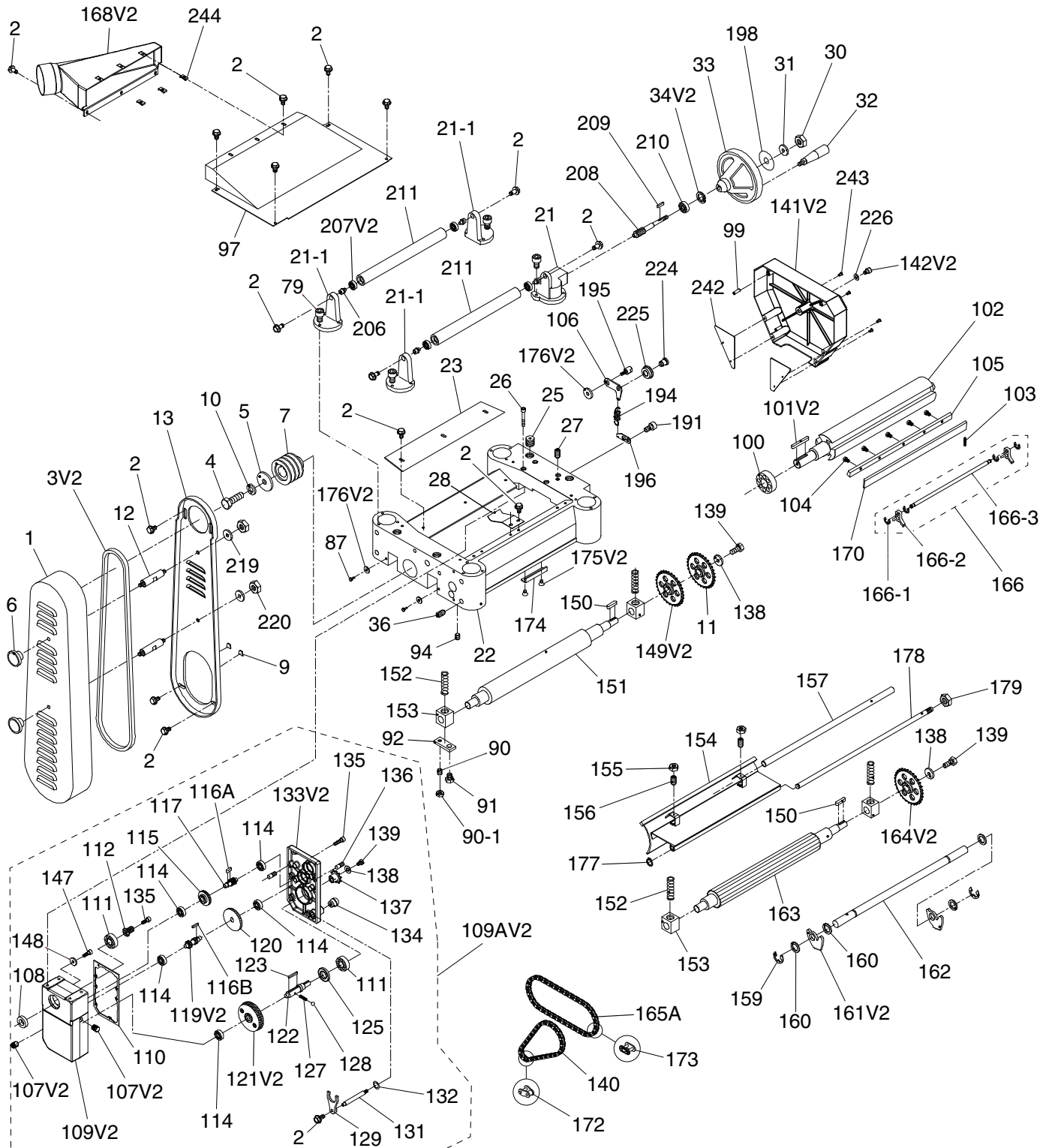


G1021Z Main



G1021Z Main Parts List

REF	PART #	DESCRIPTION
1	P1021Z001	PULLEY/BELT COVER
2	P1021Z002	FLANGE BOLT M6-1 X 12
3V2	P1021Z003V2	V-BELT M58 3L580
4	P1021Z004	HEX BOLT M8-1.25 X 25
5	P1021Z005	FENDER WASHER 8 X 30 X 4MM
6	P1021Z006	KNOB 5/16-18, D1-3/4, ROUND
7	P1021Z007	CUTTERHEAD PULLEY
9	P1021Z009	PULLEY GUARD PLATE
10	P1021Z010	LOCK WASHER 8MM
11	P1021Z011	SPROCKET 31T
12	P1021Z012	STANDOFF-HEX MM 5/16-18 X 3/8, 3
13	P1021Z013	PULLEY GUARD
21	P1021Z021	WORM GEAR HOUSING
21-1	P1021Z021-1	RETURN ROLLER BRACKET
22	P1021Z022	HEAD CASTING
23	P1021Z023	CHIP DEFLECTOR
25	P1021Z025	TENSIONING SET SCREW M22-1.5 X 20
26	P1021Z026	CAP SCREW M8-1.25 X 50
27	P1021Z027	SET SCREW M6-1 X 12
28	P1021Z028	FLAT SPRING 84 X 46 X 0.6MM
30	P1021Z030	HEX NUT M10-1.25
31	P1021Z031	FLAT WASHER 10MM
32	P1021Z032	REVOLVING HANDLE 1 X 3-9/16, 3/8-16 X 1/2
33	P1021Z033	HANDWHEEL TYPE-3 151D X 10B-K X 3/8-16
34V2	P1021Z034V2	INT RETAINING RING 30MM
36	P1021Z036	SET SCREW M10-1.5 X 12
79	P1021Z079	CAP SCREW M6-1 X 20
87	P1021Z087	HEX BOLT M6-1 X 12
90	P1021Z090	SET SCREW M6-1 X 16
90-1	P1021Z090-1	HEX NUT M6-1
91	P1021Z091	HEX BOLT M8-1.25 X 20
92	P1021Z092	BUSHING BLOCK PLATE
94	P1021Z094	SET SCREW M8-1.25 X 12
97	P1021Z097	UPPER COVER
99	P1021Z099	ROLL PIN 6 X 20
100	P1021Z100	BALL BEARING 6205-2RS
101V2	P1021Z101V2	KEY 8 X 8 X 36 V2.05.18
102	P1021Z102	CUTTERHEAD 15" 3-KNIFE
103	P1021Z103	COMPRESSION SPRING 0.6 X 5.9 X 16
104	P1021Z104	GIB BOLT M8-1.25 X 10
105	P1021Z105	GIB
106	P1021Z106	CHAIN TENSIONER
107V2	P1021Z107V2	OIL PLUG 1/4 NPT X 3/4" V2.05.18
108	P1021Z108	OIL SEAL 28 X 40 X 8
109V2	P1021Z109V2	GEARBOX V2.05.18
109AV2	P1021Z109AV2	GEARBOX ASSEMBLY V2.05.18
110	P1021Z110	GASKET
111	P1021Z111	BALL BEARING 6204ZZ
112	P1021Z112	GEAR 16T
114	P1021Z114	BALL BEARING 6201ZZ
115	P1021Z115	GEAR 47T
116A	P1021Z116A	KEY 5 X 5 X 12
116B	P1021Z116B	KEY 5 X 5 X 10
117	P1021Z117	GEARED SHAFT 18T
119V2	P1021Z119V2	GEARED SHAFT 28T/18T V2.02.19
120	P1021Z120	GEAR 71T

REF	PART #	DESCRIPTION
121V2	P1021Z121V2	COMBO GEAR 86T/96T V2.02.19
122	P1021Z122	GEAR SHAFT
123	P1021Z123	KEY 6 X 6 X 40
125	P1021Z125	OIL SEAL 25 X 47 X 6
127	P1021Z127	COMPRESSION SPRING 0.6 X 5.9 X 16
128	P1021Z128	STEEL BALL 6MM
129	P1021Z129	SHIFTING FORK
131	P1021Z131	SHIFTING SHAFT
132	P1021Z132	O-RING 12 X 1.5 S12.5
133V2	P1021Z133V2	GEARBOX COVER V2.05.18
134	P1021Z134	KNOB 3/8-16, D1-1/4, BALL
135	P1021Z135	CAP SCREW M6-1 X 25
136	P1021Z136	LOCATING PIN 8 X 7.55 X 7.95
137	P1021Z137	SPROCKET 12T W/KEY
138	P1021Z138	FENDER WASHER 6.2 X 22 X 3
139	P1021Z139	HEX BOLT M6-1 X 16
140	P1021Z140	CHAIN 06B-1 X 47 (23 LINKS)
141V2	P1021Z141V2	DRIVE CHAIN COVER V2.05.18
142V2	P1021Z142V2	CAP SCREW M8-1.25 X 10
147	P1021Z147	CAP SCREW M6-1 X 12
148	P1021Z148	FENDER WASHER 6 X 20 X 3MM
149V2	P1021Z149V2	SPROCKET 31T V2.05.18
150	P1021Z150	KEY 5 X 5 X 22
151	P1021Z151	OUTFEED ROLLER
152	P1021Z152	COMPRESSION SPRING 3.5 X 19.7 X 70
153	P1021Z153	BUSHING BLOCK
154	P1021Z154	CHIP BREAKER
155	P1021Z155	HEX NUT M6-1
156	P1021Z156	SET SCREW M6-1 X 12
157	P1021Z157	CHIP BREAKER ADJUSTMENT ROD
159	P1021Z159	E-CLIP 15MM
160	P1021Z160	SPACER
161V2	P1021Z161V2	ANTI-KICKBACK FINGER V2.05.18
162	P1021Z162	ANTI-KICKBACK SHAFT
163	P1021Z163	INFEED ROLLER
164V2	P1021Z164V2	SPROCKET 31T V2.05.18
165A	P1021Z165A	CHAIN 06B-1 X 63 (31 LINKS)
166	P1021Z166	KNIFE-SETTING JIG ASSEMBLY
166-1	P1021Z166-1	E-CLIP 9MM
166-2	P1021Z166-2	KNIFE-SETTING JIG FOOT
166-3	P1021Z166-3	KNIFE-SETTING JIG SHAFT
168V2	P1021Z168V2	DUST HOOD V2.05.18
170	P1021Z170	15" X 1" X 1/8" HSS PLANER BLADES (3)
172	P1021Z172	HALF LINK
173	P1021Z173	MASTER LINK
174	P1021Z174	DEPTH LIMITER
175V2	P1021Z175V2	FLAT HD SCR M5-.8 X 8
176V2	P1021Z176V2	SPACER 8.2 X 22 X 3MM V2.05.18
177	P1021Z177	EXT RETAINING RING 12MM
178	P1021Z178	CHIP BREAKER PIVOT ROD
179	P1021Z179	HEX NUT M12-1.75
191	P1021Z191	CAP SCREW M6-1 X 10
194	P1021Z194	EXTENSION SPRING 1 X 8.5 X 33
195	P1021Z195	SHOULDER BOLT M8-1.25 X 14, 4 X 12
196	P1021Z196	SPRING BRACKET



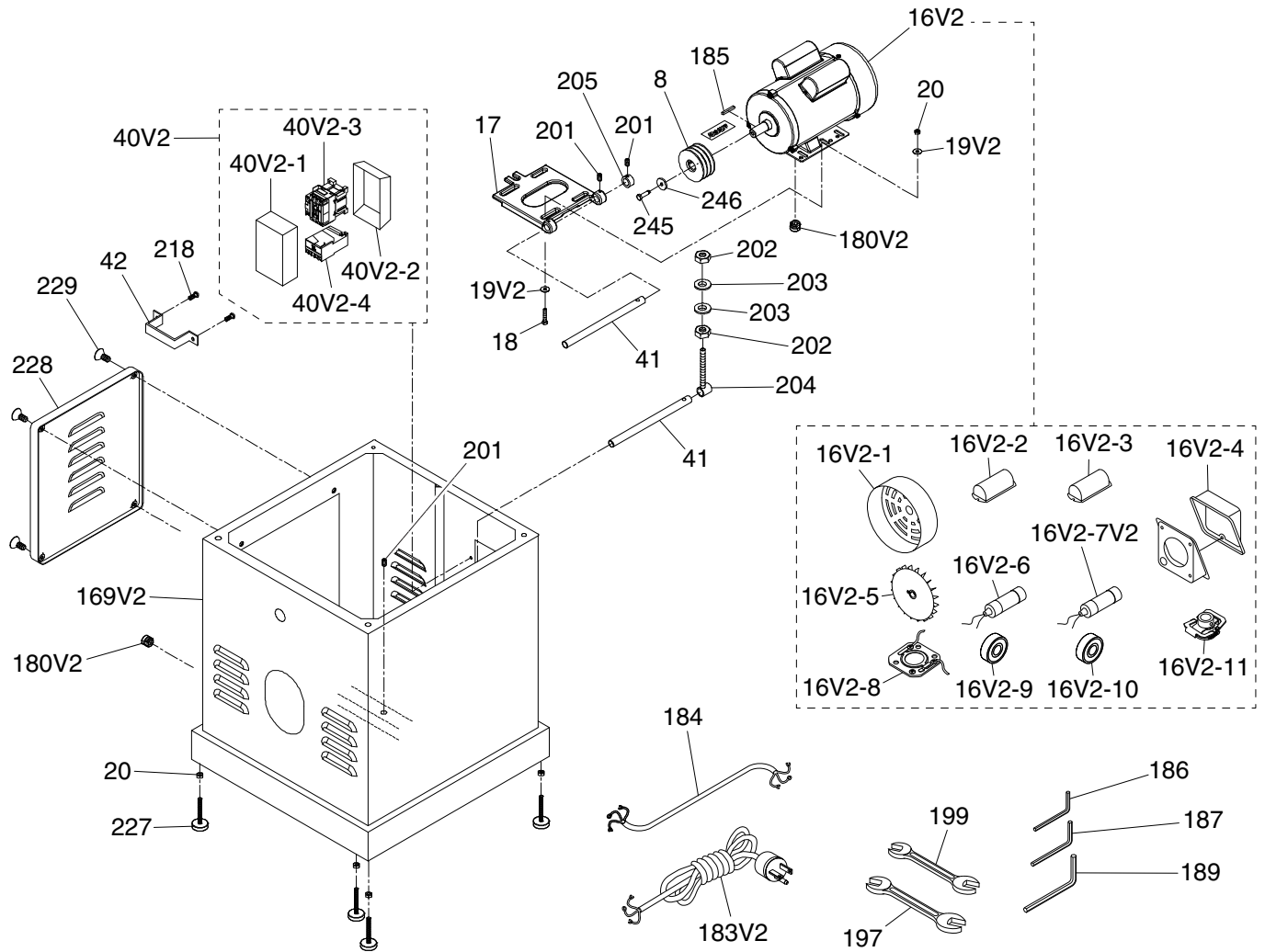
G1021Z Main Parts List (Cont.)

REF	PART #	DESCRIPTION
198	P1021Z198	HANDWHEEL DIRECTION LABEL
206	P1021Z206	BEARING SHAFT
207V2	P1021Z207V2	BALL BEARING 608ZZ V2.05.18
208	P1021Z208	WORM SHAFT
209	P1021Z209	KEY 4 X 4 X 10
210	P1021Z210	BALL BEARING 6200ZZ
211	P1021Z211	RETURN ROLLER
219	P1021Z219	FLAT WASHER 5/16

REF	PART #	DESCRIPTION
220	P1021Z220	HEX NUT 5/16-18
224	P1021Z224	IDLER SHAFT
225	P1021Z225	IDLER WHEEL
226	P1021Z226	FLAT WASHER 8MM
242	P1021Z242	GEARBOX COVER PLATE
243	P1021Z243	PHLP HD SCR M4-.7 X 8
244	P1021Z244	CLIP-ON NUT M6-1



G1021Z Stand & Motor

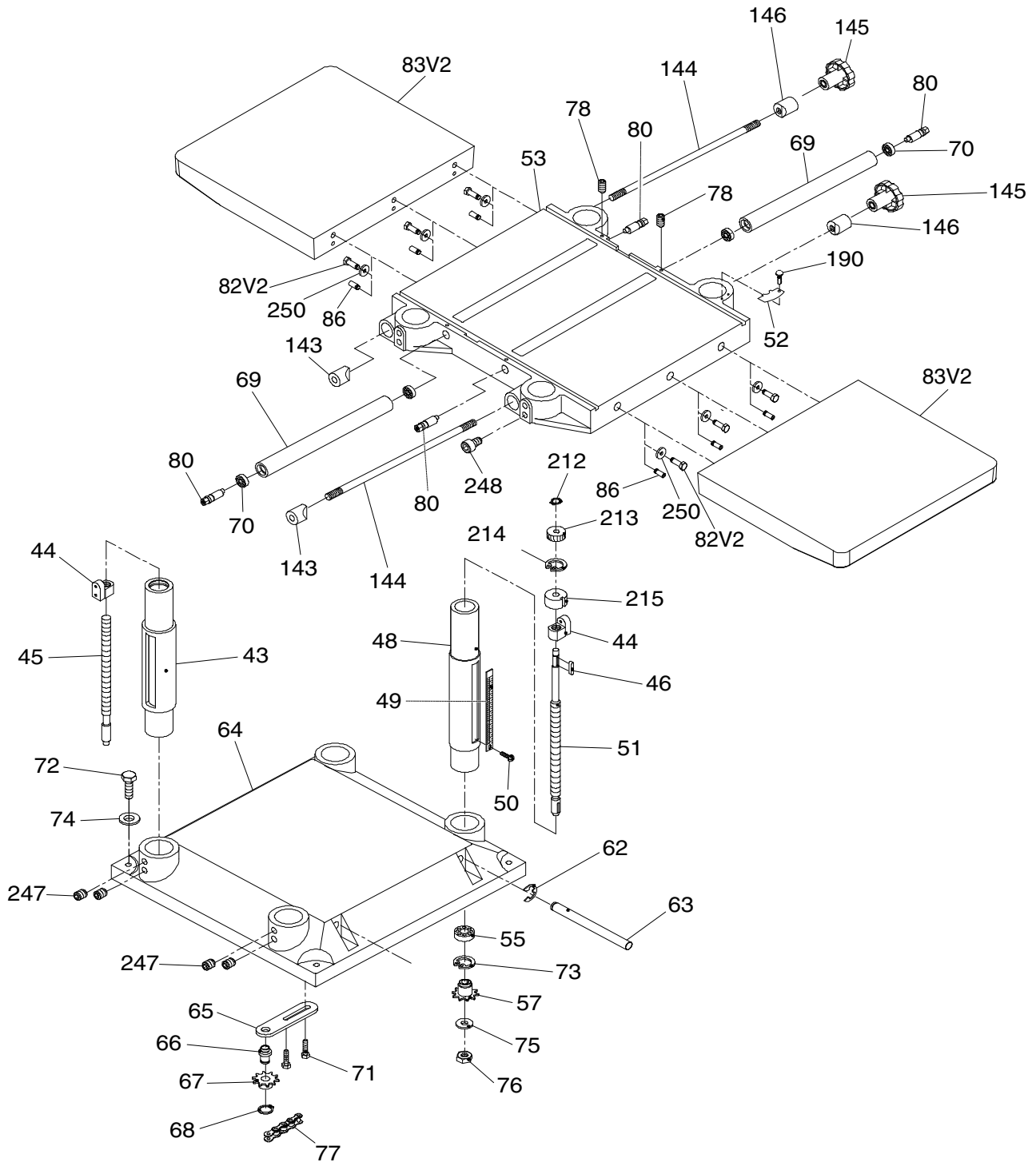


REF	PART #	DESCRIPTION
8	P1021Z008	MOTOR PULLEY
16V2	P1021Z016V2	MOTOR 3HP 230V 1-PH V2.05.18
16V2-1	P1021Z016V2-1	MOTOR FAN COVER
16V2-2	P1021Z016V2-2	CAPACITOR COVER (START)
16V2-3	P1021Z016V2-3	CAPACITOR COVER (RUN)
16V2-4	P1021Z016V2-4	MOTOR JUNCTION BOX
16V2-5	P1021Z016V2-5	MOTOR FAN
16V2-6	P1021Z016V2-6	START CAP 400M 125V 1-9/16 X 3-1/2
16V2-7V2	P1021Z016V2-7V2	R CAP 70M 250V 1-9/16 X 3-1/2 V2.09.18
16V2-8	P1021Z016V2-8	CONTACT PLATE
16V2-9	P1021Z016V2-9	BALL BEARING 6205ZZ (FRONT)
16V2-10	P1021Z016V2-10	BALL BEARING 6203ZZ (REAR)
16V2-11	P1021Z016V2-11	CENTRIFUGAL SWITCH
17	P1021Z017	MOTOR MOUNT PLATE
18	P1021Z018	HEX BOLT M8-1.25 X 40
19V2	P1021Z019V2	SPACER 8.2 X 22 X 3MM V2.05.18
20	P1021Z020	HEX NUT M8-1.25
40V2	P1021Z040V2	MAGNETIC SWITCH ASSY MP-18 V2.05.18
40V2-1	P1021Z040V2-1	MAGNETIC SWITCH COVER (FRONT)
40V2-2	P1021Z040V2-2	MAGNETIC SWITCH COVER (REAR)
40V2-3	P1021Z040V2-3	CONTACTOR SDE MA-18 220-240V
40V2-4	P1021Z040V2-4	OL RELAY SDE RA-20 12-18A
41	P1021Z041	PLATE CONNECTING ROD

REF	PART #	DESCRIPTION
42	P1021Z042	SWITCH MOUNT BRACKET
169V2	P1021Z169V2	CABINET STAND V2.05.18
180V2	P1021Z180V2	STRAIN RELIEF TYPE-1 7/16 V2.05.18
183V2	P1021Z183V2	POWER CORD 12G 3W 150" 6-20P V2.05.18
184	P1021Z184	SWITCH CORD 12G 3W 30"
185	P1021Z185	KEY 5 X 5 X 30
186	P1021Z186	HEX WRENCH 3MM
187	P1021Z187	HEX WRENCH 4MM
189	P1021Z189	HEX WRENCH 6MM
197	P1021Z197	WRENCH 12 X 14MM OPEN-ENDS
199	P1021Z199	WRENCH 10 X 13MM OPEN-ENDS
201	P1021Z201	SET SCREW M6-1 X 12
202	P1021Z202	HEX NUT M10-1.25
203	P1021Z203	FENDER WASHER 10 X 28 X 3MM
204	P1021Z204	ROD END BOLT M10-1.5 X 100, ID 16.5MM
205	P1021Z205	LOCK COLLAR
218	P1021Z218	PHLP HD SCR M6-1 X 12
227	P1021Z227	FOOT M8-1.25 X 67, D36
228	P1021Z228	MOTOR ACCESS PANEL
229	P1021Z229	FLAT HD SCR M6-1 X 12
245	P1021Z245	HEX BOLT M8-1.25 X 25
246	P1021Z246	FENDER WASHER 8 X 30 X 4MM



G1021Z Table & Base



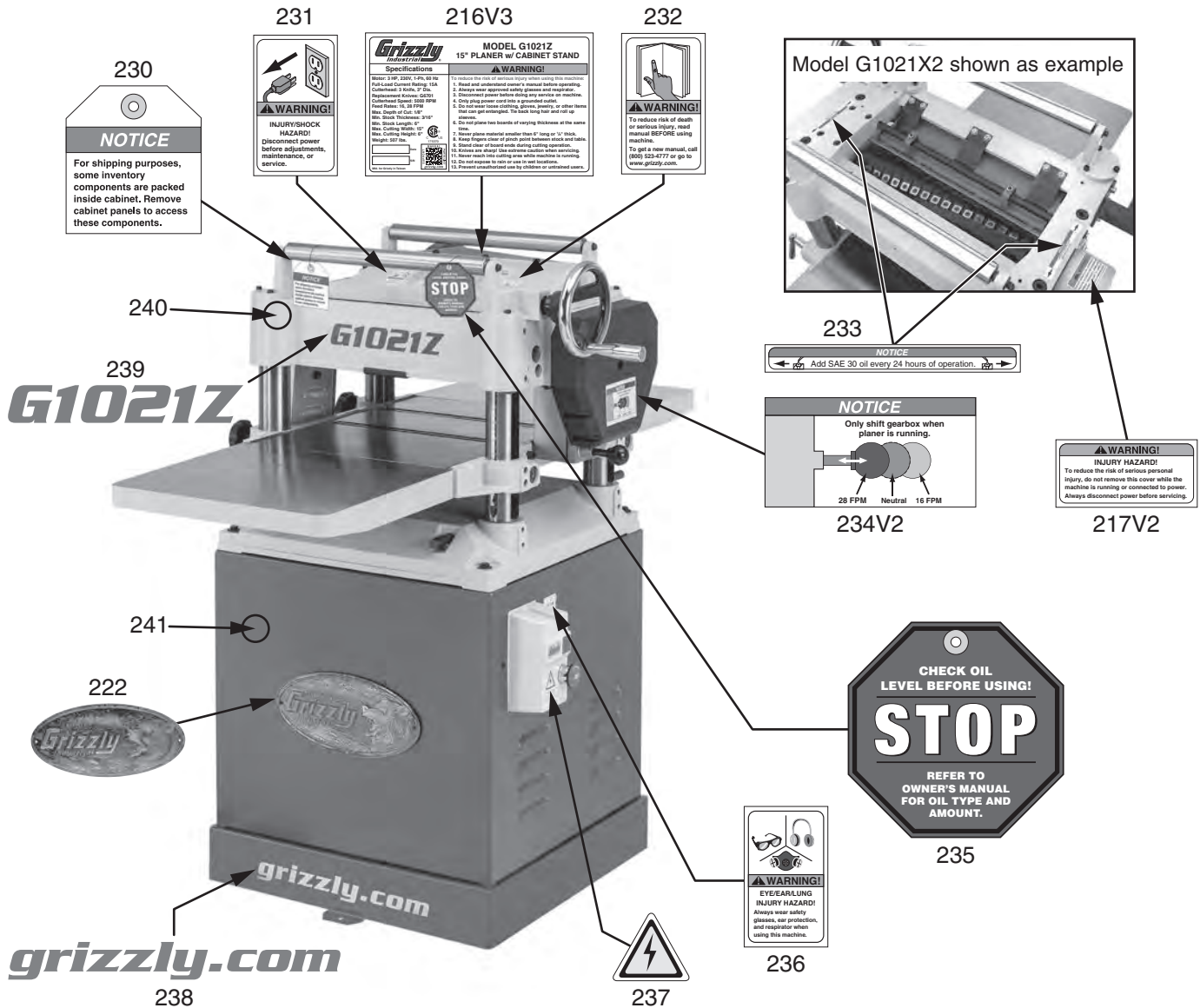
G1021Z Table & Base

REF PART #	DESCRIPTION
43	P1021Z043 COLUMN
44	P1021Z044 LEADSCREW NUT
45	P1021Z045 LEADSCREW, SECONDARY
46	P1021Z046 KEY 4 X 4 X 10
48	P1021Z048 SCALE COLUMN
49	P1021Z049 SCALE
50	P1021Z050 PHLP HD SCR M3-.5 X 6
51	P1021Z051 LEADSCREW, PRIMARY
52	P1021Z052 POINTER
53	P1021Z053 MAIN TABLE
55	P1021Z055 BALL BEARING 6202ZZ
57	P1021Z057 SPROCKET 10T
62	P1021Z062 E-CLIP 12MM
63	P1021Z063 LIFTING BAR
64	P1021Z064 BASE
65	P1021Z065 IDLER BRACKET
66	P1021Z066 IDLER SHAFT
67	P1021Z067 IDLER SPROCKET 10T
68	P1021Z068 EXT RETAINING RING 15MM
69	P1021Z069 TABLE ROLLER
70	P1021Z070 BALL BEARING 608-2RS
71	P1021Z071 HEX BOLT M8-1.25 X 25
72	P1021Z072 HEX BOLT M8-1.25 X 45

REF PART #	DESCRIPTION
73	P1021Z073 INT RETAINING RING 35MM
74	P1021Z074 FLAT WASHER 8MM
75	P1021Z075 FLAT WASHER 10MM
76	P1021Z076 HEX NUT M10-1.5
77	P1021Z077 CHAIN #410 X 134
78	P1021Z078 SET SCREW M6-1 X 12
80	P1021Z080 ECCENTRIC SHAFT
82V2	P1021Z082V2 HEX BOLT M8-1.25 X 25 V2.04.20
83V2	P1021Z083V2 EXTENSION TABLE (CAST IRON) V2.04.20
86	P1021Z086 SET SCREW M8-1.25 X 12
143	P1021Z143 THREADED GIB
144	P1021Z144 LOCKING ROD
145	P1021Z145 KNOB 6-LOBE M12-1.75, D53
146	P1021Z146 GIB
190	P1021Z190 RIVET 2 X 5MM
212	P1021Z212 EXT RETAINING RING 10MM
213	P1021Z213 GEAR 14T
214	P1021Z214 INT RETAINING RING 38MM
215	P1021Z215 SPACER
247	P1021Z247 SET SCREW M10-1.5 X 12
248	P1021Z248 CAP SCREW M6-1 X 20
250	P1021Z250 FLAT WASHER 8MM



G1021Z Labels & Cosmetics



REF	PART #	DESCRIPTION
216V3	P1021Z216V3	MACHINE ID LABEL V3.02.19
217V2	P1021Z217V2	BELT COVER WARNING LABEL V2.05.18
222	P1021Z222	GRIZZLY NAMEPLATE-LARGE
230	P1021Z230	INVENTORY SHIPPING NOTICE
231	P1021Z231	DISCONNECT POWER LABEL
232	P1021Z232	READ MANUAL LABEL
233	P1021Z233	ADD OIL NOTICE
234V2	P1021Z234V2	SHIFT GEARBOX NOTICE V2.02.19

REF	PART #	DESCRIPTION
235	P1021Z235	STOP OIL FILL TAG
236	P1021Z236	EYE/EAR/LUNG INJURY LABEL
237	P1021Z237	ELECTRICITY LABEL
238	P1021Z238	GRIZZLY.COM LABEL
239	P1021Z239	MODEL NUMBER LABEL
240	P1021Z240	TOUCH-UP PAINT, GRIZZLY PUTTY
241	P1021Z241	TOUCH-UP PAINT, GRIZZLY GREEN

⚠ WARNING

Safety labels help reduce the risk of serious injury caused by machine hazards. If any label comes off or becomes unreadable, the owner of this machine **MUST** replace it in the original location before resuming operations. For replacements, contact (800) 523-4777 or www.grizzly.com.

BUY PARTS ONLINE AT GRIZZLY.COM!
Scan QR code to visit our Parts Store.