

Main Parts List

REF	PART #	DESCRIPTION	REF	PART #	DESCRIPTION
1	P0636X001	HANDLE	55	P0636X055	ADJUST BOLT
2	P0636X002	LEVER ROD M16-2	56	P0636X056	HEX BOLT M10-1.5 X 50
3	P0636X003	HEX NUT M16-2	57	P0636X057	HEX NUT M10-1.5
4	P0636X004	ROTATE SHAFT	58	P0636X058	FLAT WASHER 10MM
5	P0636X005	BUTTON HD CAP SCR M10-1.5 X 20	59	P0636X059	SET SCREW M6-1 X 12
6	P0636X006	LOCK WASHER 10MM	60	P0636X060	MOTOR PULLEY
7	P0636X007	BLADE TRACKING KNOB M10-1.5 x 25	61	P0636X061	FLAT WASHER 8MM
8	P0636X008	BLADE TRACKING LOCK LEVER 10MM	62	P0636X062	LOWER WHEEL SHAFT
9	P0636X009	GUIDE POST LOCK KNOB M10-1.5 X 25	63	P0636X063	BUTTON HD CAP SCR M8-1.25 X 20
10	P0636X010	MACHINE BODY	64	P0636X064	WHEEL PULLEY
11	P0636X011	PILLOW BLOCK	65V3	P0636X065V3	V-BELT A36 V3.09.17
12	P0636X012	CAM	66	P0636X066	LOWER WHEEL
13	P0636X013	CAP SCREW M8-1.25 X 25	67	P0636X067	TRACKING WINDOW
14	P0636X014	HEX BOLT M8-1.25 X 80	68	P0636X068	RIVET 3.2 X 10
15	P0636X015	HEX NUT M8-1.25	69	P0636X069	LOCK NUT M6-1
16	P0636X016	UPPER WHEEL HINGE	70V2	P0636X070V2	HEX BOLT M6-1 X 25 V2.11.11
17	P0636X017	SQUARE SHAFT	71	P0636X071	KNOB
18	P0636X018	SQUARE SHAFT WASHER 8MM	72	P0636X072	HEIGHT POINTER
19	P0636X019	CAP SCREW M8-1.25 X 20	73	P0636X073	FLANGE SCREW M5-.8 X 10
20	P0636X020	FLAT HD SCR M5-.8 X 16	74V2	P0636X074V2	CAP SCREW M6-1 X 30 V2.11.11
21	P0636X021	LOCATE PLATE	75	P0636X075	BLADE TENSION HANDWHEEL
22	P0636X022	SET SCREW M10-1.5 X 16	76	P0636X076	LOWER WHEEL SUPPORT
23	P0636X023	GUIDE BLOCK	77	P0636X077	FLAT WASHER 6MM
24	P0636X024	SET SCREW M5-.8 X 5	78	P0636X078	FLANGE SCREW M6-1 X 10
25	P0636X025	COMPRESSION SPRING	79	P0636X079	BUSHING
26	P0636X026	BUSHING	80	P0636X080	BRAKE LEVER
27	P0636X027	PRESS BLOCK	81	P0636X081	CAP SCREW M6-1 X 16
28	P0636X028	THRUST BEARING 51201	82	P0636X082	HEX NUT M6-1
29	P0636X029	BLADE TENSION SHAFT	83	P0636X083	EXTENSION SPRING
30	P0636X030	TENSION LINE	84	P0636X084	BRAKE STEP PLATE
31	P0636X031	UPPER WHEEL SHAFT	85	P0636X085	HEX NUT M4-.7
32	P0636X032	BALL BEARING 6306ZZ	86	P0636X086	LIMIT SWITCH KL7141
33	P0636X033	INT RETAINING RING 72MM	87	P0636X087	PHLP HD SCR M4-.7 X 30
34	P0636X034	BUSHING	88	P0636X088	CORD CLAMP 5/8"
35	P0636X035	UPPER WHEEL	89	P0636X089	TAP SCREW M4 X 8
36	P0636X036	BRAKE PAD	90	P0636X090	BRAKE LEVER CORD
37	P0636X037	LOCK WASHER 8MM	91	P0636X091	CORD BUSHING
38	P0636X038	UPPER WHEEL SLIDING BRACKET	92	P0636X092	PROTECT TUBE 1/2" X 43-5/16"
39	P0636X039	COMPRESSION SPRING	93	P0636X093	BRUSH
40	P0636X040	GUIDE PIN 3 X 12	94V2	P0636X094V2	MOTOR 5HP V2.06.08
41	P0636X041	MOVING PLATE	94-1	P0636X094-1	MOTOR COVER
42	P0636X042	FIXED PLATE	94-2	P0636X094-2	MOTOR FAN
43	P0636X043	TAP SCREW M4 X 10	94-3	P0636X094-3	CAPACITOR COVER
44	P0636X044	FLAT WASHER 4MM	94-4V2	P0636X094-4V2	S CAPACITOR 300M 250V 1-3/4 x 4 V2.06.08
45	P0636X045	TENSION POINTER	94-5V2	P0636X094-5V2	R CAPACITOR 45M 450V 2 x 3-1/2 V2.06.08
46	P0636X046	TAP SCREW M4 X 16	94-6	P0636X094-6	JUNCTION BOX
47	P0636X047	TENSION SCALE	95	P0636X095	ADJUSTMENT HUB COVER
48	P0636X048	START SWITCH	96	P0636X096	BUTTON HD CAP SCR M8-1.25 X 20
49	P0636X049	STOP SWITCH	97	P0636X097	SET BOLT M10-1.5 X 30
50	P0636X050	KEY SWITCH	98	P0636X098	CORD CLAMP 1/2"
51	P0636X051	SWITCH PLATE	99	P0636X099	FLANGE SCREW M5-.8 X 50
52	P0636X052	CONNECTING BLOCK	100	P0636X100	TERMINAL BOX
53	P0636X053	CONNECTING CORD	103V2	P0636X103V2	POWER CORD 12G 3W V2.11.10
54	P0636X054	SWITCH CORD	104	P0636X104	STRAIN RELIEF M20



Main Parts List (Cont.)

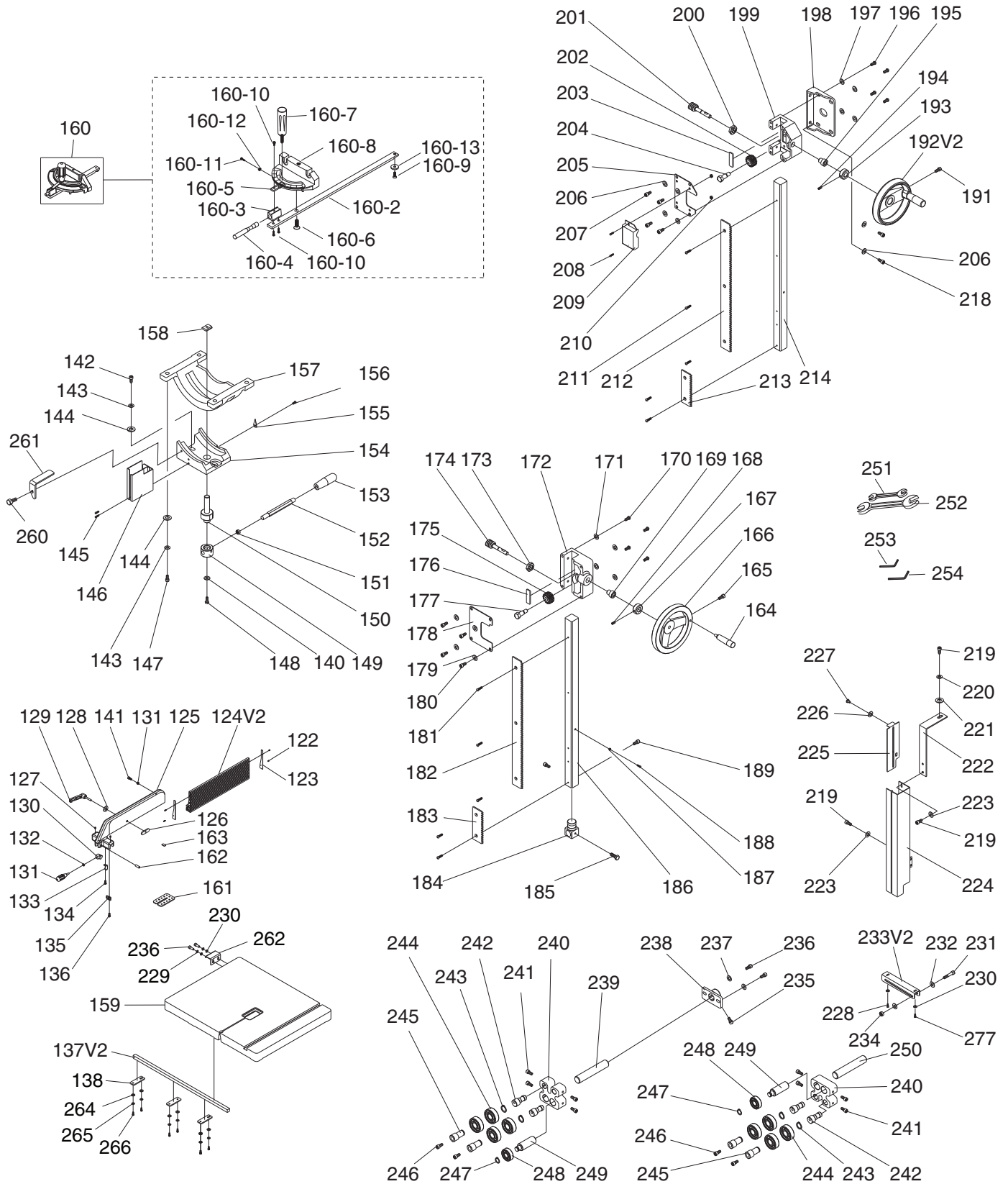
REF	PART #	DESCRIPTION
105V2	P0636X105V2	MAGNETIC SWITCH MPE-30 V2.11.10
105-1	P0636X105-1	MAG SWITCH BACK COVER
105-2	P0636X105-2	CONTACTOR SDE MA-30
105-3V2	P0636X105-3V2	OL RELAY SDE RA-30 18-26A V2.11.10
105-4	P0636X105-4	MAG SWITCH FRONT COVER
106	P0636X106	MOTOR CORD
107	P0636X107	STRAIN RELIEF M20
108	P0636X108	PLATE
109	P0636X109	SWITCH CORD 18G 2W
110	P0636X110	FLAT WASHER 4MM
111	P0636X111	DOOR LATCH SWITCH CANLIE AZD-S11
112	P0636X112	FLANGE SCREW M4-.7 X 35
113	P0636X113	PHLP HD SCR M4-.7 X 10
114V2	P0636X114V2	UPPER WHEEL COVER V2.06.08
115	P0636X115	LOWER WHEEL COVER

REF	PART #	DESCRIPTION
116	P0636X116	SAW BLADE 3TPI 162" X 1" X 0.035
117	P0636X117	TAP SCREW M4 X 10
118	P0636X118	CORD CLAMP 5/16"
119	P0636X119	FLANGE SCREW M5-.8 X 10
120	P0636X120	LOCK WASHER 6MM
121	P0636X121	BUSHING
191	P0636X191	CAP SCREW M6-1 X 25
255	P0636X255	EYE BOLT M10-1.5- X 15
263	P0636X263	NYLON SET SCREW M7 X 10
267	P0636X267	CONNECTING CORD 12G 3C
268	P0636X268	WIRE NUT P3
269	P0636X269	EXT TOOTH WASHER 5MM
274	P0636X274	STOP PLATE
275	P0636X275	CAP SCREW M5-.8 X 12
276	P0636X276	FLAT WASHER 5MM

Please Note: We do our best to stock replacement parts whenever possible, but we cannot guarantee that all parts shown here are available for purchase. Call (800) 523-4777 or visit our online parts store at www.grizzly.com to check for availability.



Fence/Guides/Trunnion



Fence/Guides/Trunnion Parts List

REF	PART #	DESCRIPTION
122	P0636X122	TAP SCREW 3.5 X 8
123	P0636X123	FENCE PIECE 148 X 22 X 1
124V2	P0636X124V2	RESAW FENCE AL 590MM V2.04.17
125	P0636X125	FENCE
126	P0636X126	MOVING PLATE
127	P0636X127	PLASTIC SET SCREW
128	P0636X128	FLAT WASHER 8MM
129	P0636X129	LOCK KNOB M8-1.25 X 44
130	P0636X130	PIVOT BLOCK
131	P0636X131	HEX NUT M8-1.25
132	P0636X132	FENCE HANDLE M8-1.25 X 20
133	P0636X133	SPRING PIECE
134	P0636X134	FLANGE SCREW M4-.7 X 8
135	P0636X135	POINTER
136	P0636X136	FLANGE SCREW M5-.8 X 8
137V2	P0636X137V2	GUARD RAIL SQUARE V2.09.11
138	P0636X138	GUARD RAIL PLATE
139	P0636X139	FLAT WASHER 8MM
140	P0636X140	LOCK WASHER 8MM
141	P0636X141	CAP SCREW M8-1.25 X 20
142	P0636X142	CAP SCREW M10-1.5 X 30
143	P0636X143	LOCK WASHER 10MM
144	P0636X144	FLAT WASHER 10MM
145	P0636X145	FLANGE SCREW M6-1 X 10
146	P0636X146	BLADE GUARD
147	P0636X147	CAP SCREW M10-1.5 X 35
148	P0636X148	HEX BOLT M8-1.25 X 20
149	P0636X149	MICRO ADJUSTING RING
150	P0636X150	PRESS SHAFT
151	P0636X151	HEX NUT M12-1.75
152	P0636X152	HANDLE SHAFT
153	P0636X153	HANDLE KNOB M12-1.75 FEMALE
154	P0636X154	TRUNNION HOUSING
155	P0636X155	POINTER
156	P0636X156	PHLP HD SCR M4-.7 X 10
157	P0636X157	TRUNNION BLOCK
158	P0636X158	PRESS BLOCK
159	P0636X159	TABLE
160	P0636X160	MITER GAUGE ASSEMBLY
160-2	P0636X160-2	GUIDE BAR
160-3	P0636X160-3	LOCKING BRACKET
160-4	P0636X160-4	LOCKING SHAFT
160-5	P0636X160-5	POINTER
160-6	P0636X160-6	STEP SCREW
160-7	P0636X160-7	HANDLE 5/16-18 X 1-1/2
160-8	P0636X160-8	MITER GAUGE BODY
160-9	P0636X160-9	FLAT HD SCR M6-1 X 6
160-10	P0636X160-10	PHLP HD SCR 10-24 X 3/8
160-11	P0636X160-11	PHLP HD SCR M4-.7 X 16
160-12	P0636X160-12	HEX NUT M4-.7
160-13	P0636X160-13	FLAT WASHER 8MM
161	P0636X161	TABLE INSERT
162	P0636X162	SHAFT
163	P0636X163	NYLON PIECE

REF	PART #	DESCRIPTION
164	P0636X164	HANDLE 3/8-16 X 1/2
165	P0636X165	CAP SCREW M6-1 X 25
167	P0636X167	LOCK COLLAR
166	P0636X166	HANDWHEEL
168	P0636X168	SET SCREW M5-.8 X 5
169	P0636X169	BUSHING
170	P0636X170	BUTTON HD CAP SCR M8-1.25 X 35
171	P0636X171	FLAT WASHER 8MM
172	P0636X172	UPPER GUIDE BRACKET
173	P0636X173	HEX NUT M16-1.5
174	P0636X174	WORM SHAFT
175	P0636X175	WORM GEAR
176	P0636X176	FIXED PLATE
177	P0636X177	FIXED BOLT
178	P0636X178	UPPER GUIDE BRACKET COVER
179	P0636X179	LOCK WASHER 8MM
180	P0636X180	CAP SCREW M8-1.25 X 16
181	P0636X181	FLAT HD SCR M4-.7 X 10
182	P0636X182	RACK
183	P0636X183	EXTENSION RACK
184	P0636X184	UPPER GUIDE SUPPORT BLOCK
185	P0636X185	HEX BOLT M6-1 X 10
186	P0636X186	UPPER GUIDE BAR
187	P0636X187	HEX NUT M4-.7
188	P0636X188	PHLP HD SCR M4-.7 X 10
189	P0636X189	CAP SCREW M6-1 X 16
191	P0636X191	CAP SCREW M6-1 X 25
192V2	P0636X192V2	HANDWHEEL W/HANDLE V2.06.08
193	P0636X193	LOCK COLLAR
194	P0636X194	SET SCREW M5-.8 X 5
195	P0636X195	BUSHING
196	P0636X196	BUTTON HD CAP SCR M8-1.25 X 20
197	P0636X197	FLAT WASHER 8MM
198	P0636X198	TRUNNION PLATE
199	P0636X199	TABLE TILT GUIDE BRACKET
200	P0636X200	HEX NUT M16-1.5
201	P0636X201	WORM CYLINDER
202	P0636X202	WORM GEAR
203	P0636X203	FIXED PLATE
204	P0636X204	FIXED BOLT
205	P0636X205	TABLE TILT GUIDE BRACKET COVER
206	P0636X206	LOCK WASHER 8MM
207	P0636X207	CAP SCREW M8-1.25 X 16
208	P0636X208	FLANGE SCREW M5-.8 X 10
209	P0636X209	COVER
210	P0636X210	HEX NUT M5-.8
211	P0636X211	FLAT HD SCR M4-.7 X 10
212	P0636X212	RACK
213	P0636X213	EXTENSION RACK
214	P0636X214	SQUARE TUBE
218	P0636X218	CAP SCREW M8-1.25 X 20
219	P0636X219	CAP SCREW M6-1 X 10
220	P0636X220	LOCK WASHER 6MM
221	P0636X221	FLAT WASHER 6MM



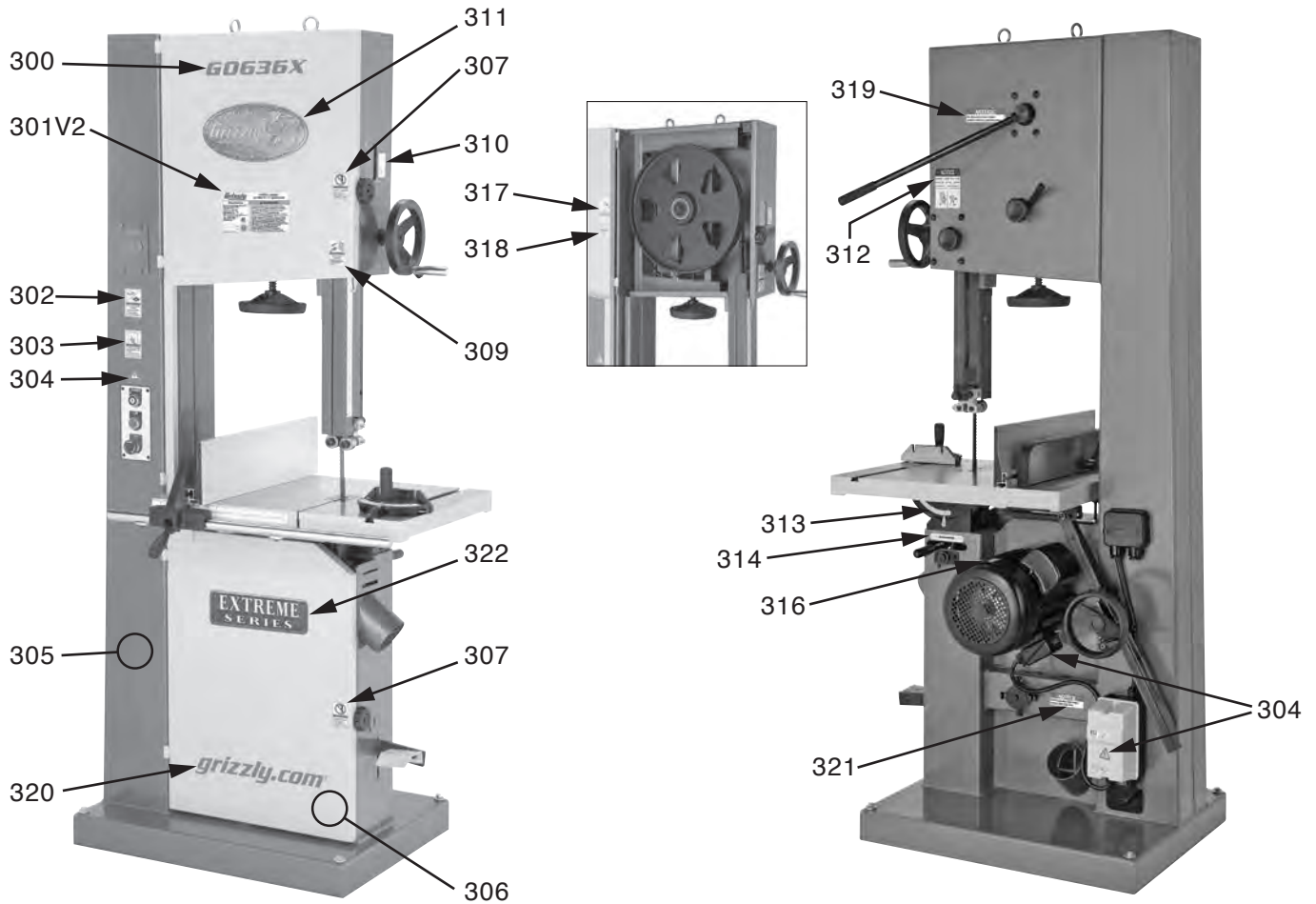
Fence/Guides/Trunnion Parts List (Cont.)

REF	PART #	DESCRIPTION
222	P0636X222	SUPPORT PLATE
224	P0636X224	PROTECT COVER ASM
225	P0636X225	SLIDING PLATE
226	P0636X226	FIBER WASHER 13MM
227	P0636X227	SHOULDER SCREW
228	P0636X228	CAP SCREW M6-1 X 10
229	P0636X229	LOCK WASHER 6MM
230	P0636X230	FLAT WASHER 6MM
231	P0636X231	CAP SCREW M8-1.25 X 55
232	P0636X232	FLAT WASHER 8MM
233V2	P0636X233V2	SLIDING PLATE V2.11.11
234	P0636X234	LOCK NUT M8-1.25
235	P0636X235	HEX BOLT M6-1 X 16
236	P0636X236	CAP SCREW M6-1 X 16
237	P0636X237	FLAT WASHER 6MM
238	P0636X238	LOWER SUPPORT BRACKET
239	P0636X239	SHAFT
240	P0636X240	BLADE GUIDE SUPPORT
241	P0636X241	HEX BOLT M6-1 X 16
242	P0636X242	ECCENTRIC SHAFT
243	P0636X243	EXT RETAINING RING 15MM

REF	PART #	DESCRIPTION
244	P0636X244	BALL BEARING 6202ZZ
245	P0636X245	HANDLE BUSHING
246	P0636X246	CAP SCREW M6-1 X 40
247	P0636X247	EXT RETAINING RING 12MM
248	P0636X248	BALL BEARING 6201ZZ
249	P0636X249	SPACING SLEEVE
250	P0636X250	SHAFT
251	P0636X251	WRENCH 10 X 13
252	P0636X252	WRENCH 17 X 19
253	P0636X253	HEX WRENCH 5MM
254	P0636X254	HEX WRENCH 6MM
257	P0636X257	LOCK WASHER 8MM
258	P0636X258	CAP SCREW M8-1.25 X 20
260	P0636X260	FLANGE SCREW M6-1 X 12
261	P0636X261	L-HOLDER PLATE
262	P0636X262	STOP BRACKET
264	P0636X264	FLAT WASHER 6MM
265	P0636X265	LOCK WASHER 6MM
266	P0636X266	CAP SCREW M6-1 X 20
277	P0636X277	CAP SCREW M6-1 X 12



Labels & Cosmetics



REF	PART #	DESCRIPTION
300	P0636X300	MODEL NUMBER LABEL
301V2	P0636X301V2	MACHINE ID LABEL V2.07.19
302	P0636X302	SAFETY GLASSES LABEL
303	P0636X303	READ MANUAL LABEL
304	P0636X304	ELECTRICITY LABEL
305	P0636X305	TOUCH UP PAINT, GRIZZLY GREEN
306	P0636X306	TOUCH UP PAINT, GREY PUTTY
307	P0636X307	DONT OPEN LABEL
309	P0636X309	UNPLUG BANDSAW LABEL
310	P0636X310	BLADE ASSEMBLY DIRECTION LABEL
311	P0636X311	GRIZZLY NAMEPLATE-LARGE

REF	PART #	DESCRIPTION
312	P0636X312	TENSION ADJ LABEL
313	P0636X313	TABLE ANGLE SCALE
314	P0636X314	TABLE LOCK LEVER LABEL
316	P0636X316	MOTOR LABEL
317	P0636X317	UPPER WHEEL HINGE/STOP LABEL
318	P0636X318	PATENT LABEL
319	P0636X319	LOCK LEVER LABEL
320	P0636X320	GRIZZLY.COM LABEL
321	P0636X321	HANDWHEEL LOCK LEVER LABEL
322	P0636X322	EXTREME SERIES PLATE

⚠️ WARNING

Safety labels help reduce the risk of serious injury caused by machine hazards. If any label comes off or becomes unreadable, the owner of this machine **MUST** replace it in the original location before resuming operations. For replacements, contact (800) 523-4777 or www.grizzly.com.

