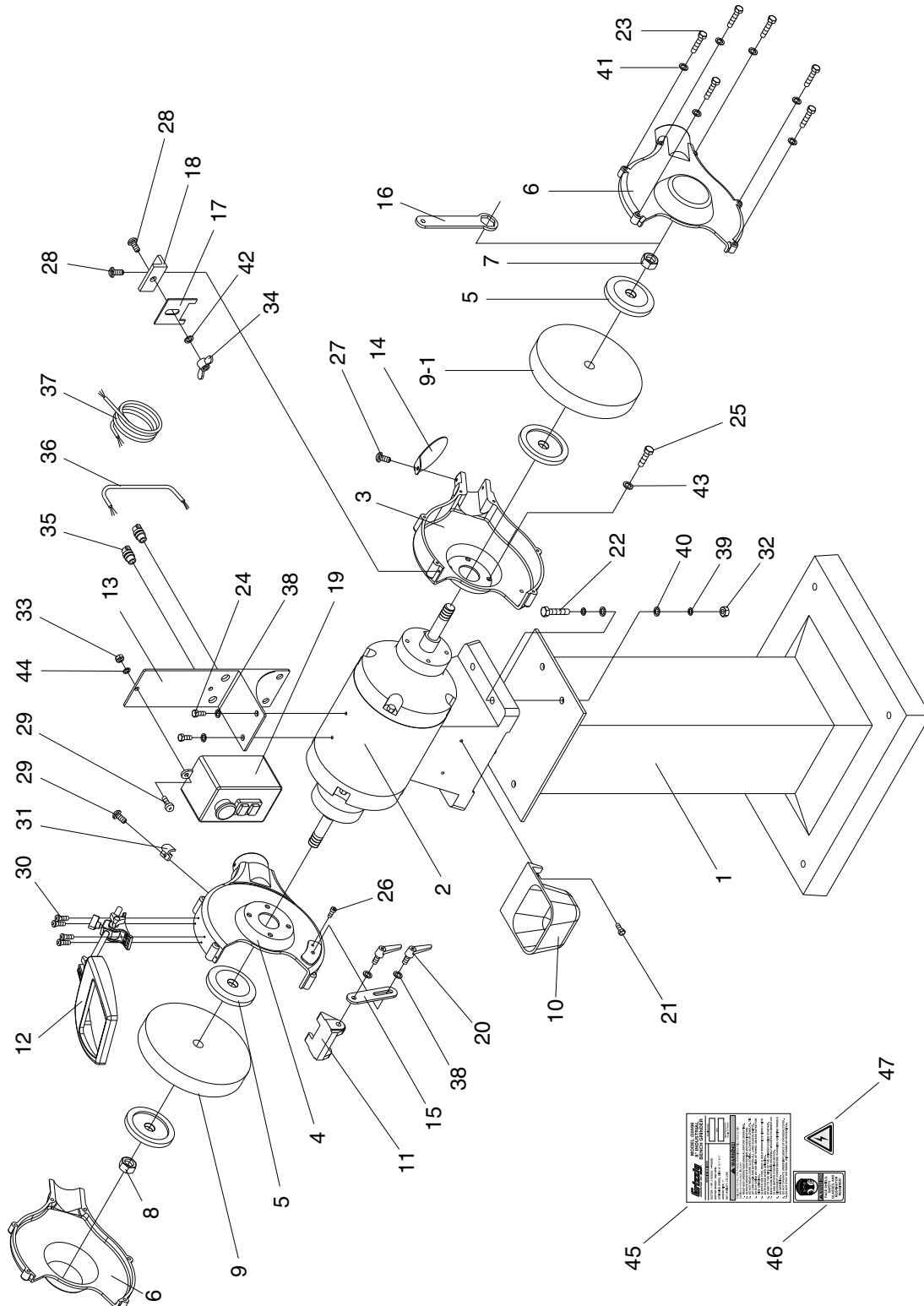
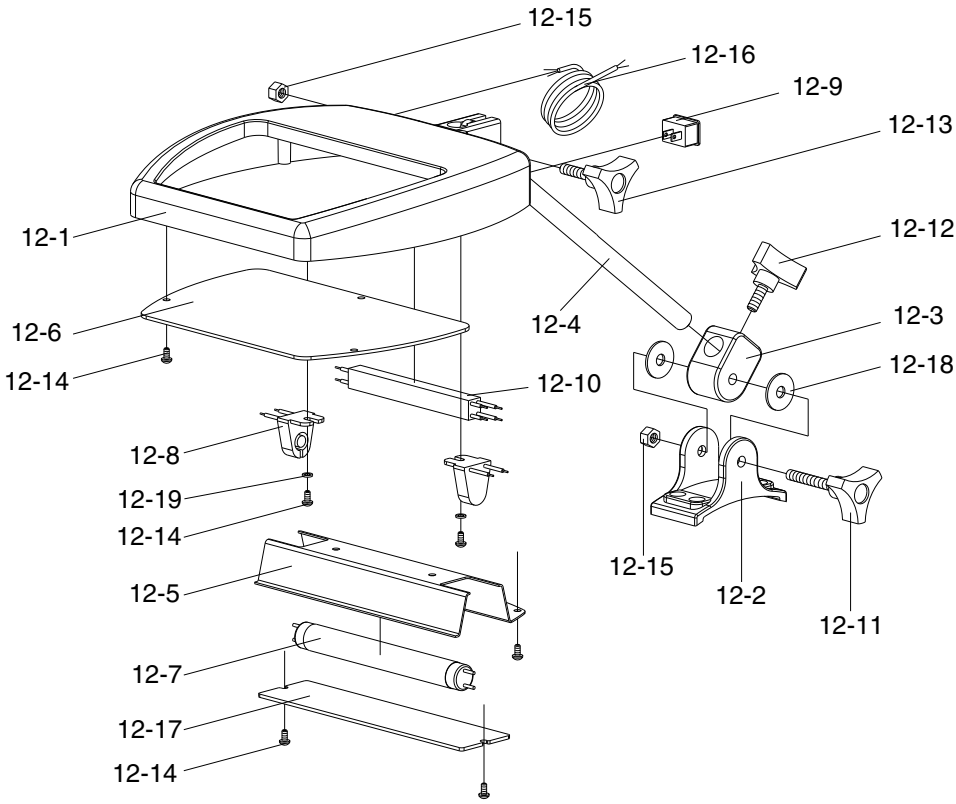


# SECTION 8: PARTS

## Parts Breakdown Main



# Parts Breakdown Shield



## WARNING

Safety labels warn about machine hazards and ways to prevent injury. The owner of this machine **MUST** maintain the original location and readability of the labels on the machine. If any label is removed or becomes unreadable, **REPLACE** that label before using the machine again. Contact Grizzly at (800) 523-4777 or [www.grizzly.com](http://www.grizzly.com) to order new labels.



# Parts List G0598-G0599

REF	PART #	DESCRIPTION
1	H7834	STAND (OPTIONAL)
2	P0598002	MOTOR 2HP, 1PH, 220V(G0598)
2-1	P0597002-1	CAPACITOR 50MFD-250VAC
2	P0599002	MOTOR 3HP, 3PH, 220V(G0599)
3	P0598003	WHEEL GUARD, RIGHT
4	P0598004	WHEEL GUARD, LEFT
5	P0598005	WHEEL FLANGE
6	P0598006	WHEEL COVER
7	PN36	HEX NUT 1-1/4-7 (G0598-G0599)
8	PN37	HEX NUT 1-1/4-7 LH (G0598-G0599)
9	H8884	WHEEL 12 X 1.5 X1-1/4, 24 GRIT
9-1	H8885	WHEEL 12 X 1.5 X1-1/4, 36 GRIT
9	H8885	WHEEL 12 X 2 X 1-1/4, 24 GRIT
9-1	H8887	WHEEL 12 X 2 X 1-1/4, 36 GRIT
10	P0596010	WATER TRAY
11	P0598011	TOOL REST (G0598)
11	P0599011	TOOL REST (G0599)
12	P0597012A	EYE SHIELD W/ LIGHT ASSY
12-1	P0596012-1	FRAME
12-2	P0596012-2	MOUNT
12-3	P0596012-3	PIVOT SUPPORT
12-4	P0596012-4	ARM
12-5	P0596012-5	BAFFLE
12-6	P0596012-6	CLEAR SHIELD
12-7	P0597012-7	FLUORESCENT TUBE
12-8	P0596012-8	LAMP CONTACT
12-9	P0596012-9	SWITCH
12-10	P0597012-10	BALLAST
12-11	P0596012-11	KNOB 1/4-20 X 1-3/4
12-12	P0596012-12	KNOB 1/4-20 X 1/2
12-13	P0596012-13	KNOB 1/4-20 X 1
12-14	PHTEK33	TAP SCREW 8-32 X 1/4
12-15	PN05	HEX NUT 1/4-20
12-16	P0596012-16	POWER SUPPLY CORD
12-17	P0596012-17	LAMP COVER
12-18	P0596012-18	SPECIAL WASHER
12-19	PW08	FLAT WASHER #8
13	P0596013	SWITCH BRACKET

REF	PART #	DESCRIPTION
14	P0596014	SPARK HOOD
15	P0598015	TOOL REST SUPPORT
16	P0598016	WRENCH 50MM (G0598-G0599)
17	P0598017	SPARK SHIELD(G0598)
17	P0599017	SPARK SHIELD(G0599)
18	P0596018	SPARK SHIELD BRACKET
19	P0598019	MAGNETIC SWITCH 2HP(G0598)
19	P0599019	MAGNETIC SWITCH 3HP(G0599)
20	P0596020	HANDLE 5/16-18 X 5/8
21	PFB13	FLANGE BOLT 1/4-20 X 1
22	PB58	HEX BOLT 3/8-16 X 2
23	PB93	HEX BOLT 10-24 X 1-1/2
24	PB09	HEX BOLT 5/16-18 X 1/2
25	PB07M	HEX BOLT M8-1.25 X 25
26	PSB17	CAP SCREW 1/4-20 X 3/8
27	PS06	PHLP HD SCR 10-24 X 3/8
28	PS04	PHLP HD SCR 1/4-20 X 1/2
29	PS01	PHLP HD SCR 10-24 X 1/2
30	PFH21	FLAT HD SCR 10-24 X 3/4
31	P0596031	NYLON CLIP 8MM
32	PN08	HEX NUT 3/8-16
33	PN05	HEX NUT 1/4-20
34	PWN02	WING NUT 1/4-20
35	P0596035	STRAIN RELIEF
36	P0598036	MOTOR CORD
37	P0598037	POWER CORD
38	PW07	FLAT WASHER 5/16
39	PLW04	LOCK WASHER 3/8
40	PW02	FLAT WASHER 3/8
41	PLW03	LOCK WASHER 3/16
42	PW06	FLAT WASHER 1/4
43	PLW04M	LOCK WASHER 8MM
44	PLW03	LOCK WASHER 3/16
45	P0598045	MACHINE ID LABEL (G0598)
45	P0599045	MACHINE ID LABEL (G0599)
46	P0596046	FACE SHIELD LABEL
47	PLABEL-14	ELECTRICITY LABEL

