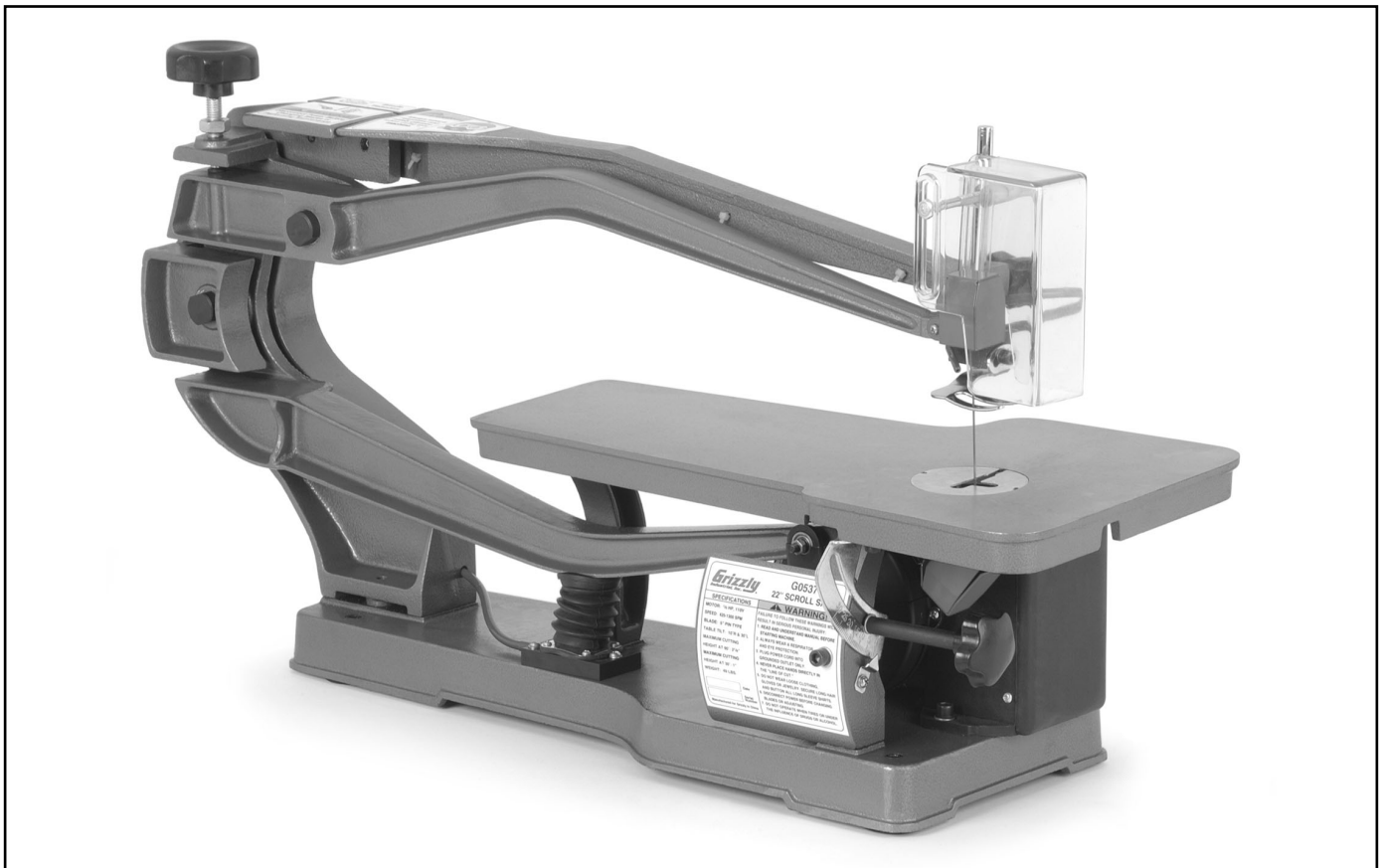


Grizzly Industrial, Inc.®

MODEL G0537 22" SCROLL SAW PARTS LIST



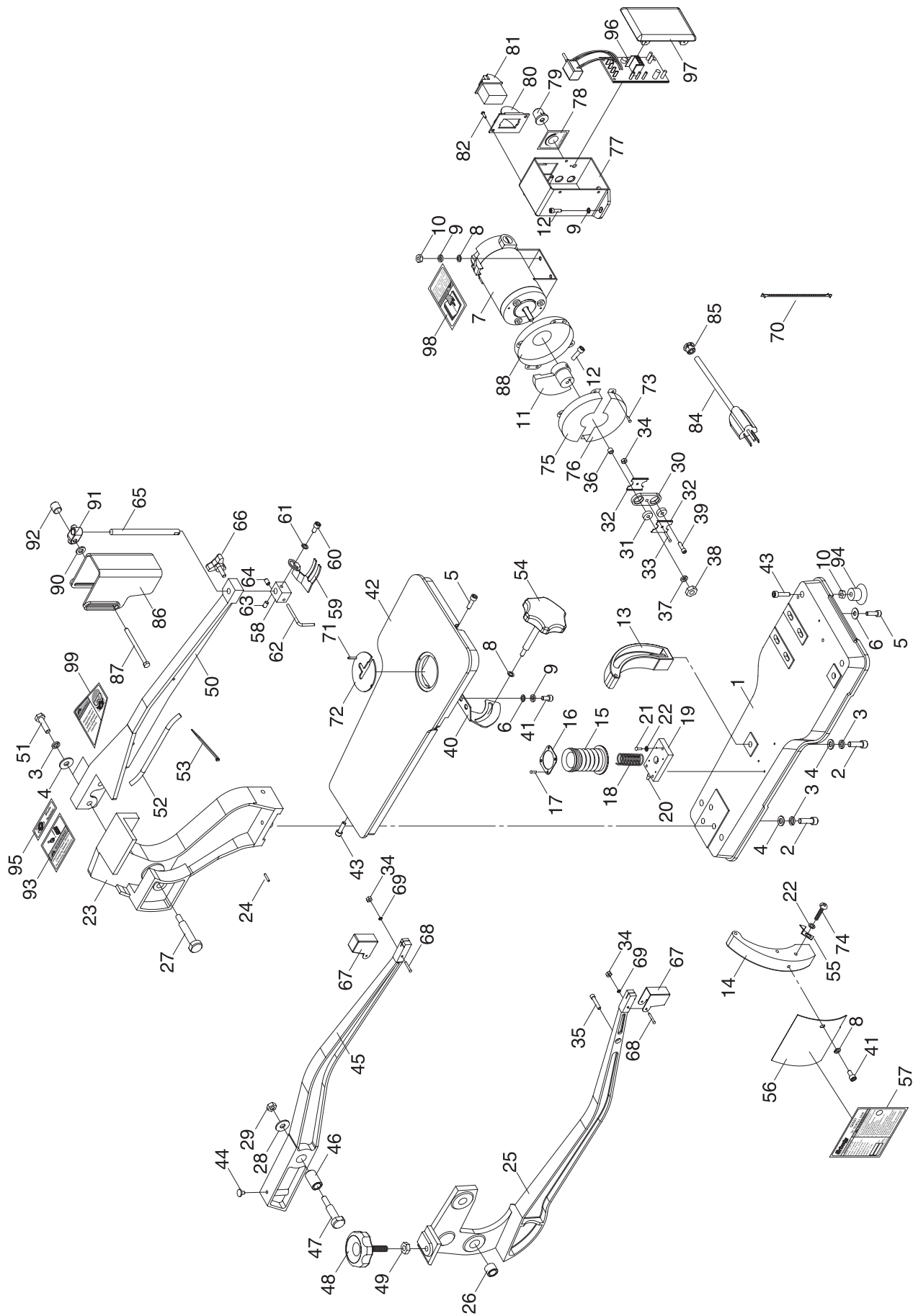
COPYRIGHT © OCTOBER 2003 BY GRIZZLY INDUSTRIAL, INC.

**WARNING: NO PORTION OF THIS MANUAL MAY BE REPRODUCED IN ANY SHAPE
OR FORM WITHOUT THE WRITTEN APPROVAL OF GRIZZLY INDUSTRIAL, INC.**

#5813 PRINTED IN CHINA

ONLINE PARTS LIST DISCLAIMER

THESE PARTS REPRESENT THE CONFIGURATION OF THE MACHINE AS IT IS CURRENTLY BEING SHIPPED. THE MACHINE CONFIGURATION CAN CHANGE AS PRODUCT IMPROVEMENTS ARE INCORPORATED. IF YOU OWN AN EARLIER VERSION OF THE MACHINE, THIS PARTS LIST MAY NOT EXACTLY DEPICT YOUR MACHINE. CONTACT CUSTOMER SERVICE IF YOU HAVE ANY QUESTIONS ABOUT PART DIFFERENCES. PREVIOUS PARTS LIST VERSIONS ARE NOT AVAILABLE ONLINE.



REF	PART #	DESCRIPTION
1	P0537001	Base
2	PSB31M	Cap Screw M8-1.25 x 25
3	PLW04M	Lock Washer 8mm
4	PW01M	Flat Washer 8mm
5	PSB02M	Cap Screw M6-1 x 20
6	PW03M	Flat Washer 6mm
7	P0537007	Motor
8	PW03M	Flat Washer 6mm
9	PLW03M	Lock Washer 6mm
10	PN01M	Hex Nut M6-1
11	P0537011	Rocker Arm
12	PSB28M	Cap Screw M6-1 x 15
13	P0537013	Rear Strut
14	P0537014	Front Strut
15	P0537015	Air Bellows
16	P0537016	Pressure Plate
17	PHTEK3M	Tap Screw M3-.5 x 8
18	P0537018	Spring
19	P0537019	Anchor Plate
20	P0537020	Air-intake Opening
21	PS56M	Phlp Hd Scr M4-.7 x 16
22	PW05M	Flat Washer 4mm
23	P0537023	Pillar
24	PRP42M	Roll Pin 3 x 20mm
25	P0537025	Lower Arm
26	P0537026	Bushing
27	P0537027	Fulcrum Bolt
28	PW01M	Flat Washer 8mm
29	PN03M	Hex Nut M8-1.25
30	P0537030	Connecting Link
31	P625	Bearing 625ZZ
32	P0537032	Connecting Link Plate
33	PS50M	Phlp Hd Scr M3-.5 x 12
34	PN07M	Hex Nut M3-.5
35	PSB95M	Cap Screw M5-.8 x 30
36	P0537036	Sleeve
37	PLW01M	Lock Washer 5mm
38	PN06M	Hex Nut M5-.8
39	PSB53M	Cap Screw M5-.8 x 18
40	P0537040	Table Tilt Scale
41	PB02M	Hex Bolt M6-1 x 12
42	P0537042	Table
43	PB29M	Hex Bolt M6-1 x 30
44	P0537044	Pressure Plate
45	P0537045	Upper Arm
46	P0537046	Bushing
47	P0537047	Fulcrum Bolt
48	P0537048	Adjustment Knob (Male)
49	PN02M	Hex Nut M10-1.5

REF	PART #	DESCRIPTION
50	P0537050	Arm
51	PB07M	Hex Bolt M8-1.25 x 25
52	P0537052	Plastic Tube
53	P0537053	Cable Tie
54	P0537054	Tilting Locking Knob M6
55	P0537055	Pointer
56	P0537056	Rocker Arm Guard
57	P0537057	Main Label
58	P0537058	Lower Connecting Block
59	P0537059	Hold-Down Foot
60	PSB86M	Cap Screw M5-.8 x 10
61	PW02M	Flat Washer 5mm
62	P0537062	Dust Blower
63	PSS01M	Set Screw M6-1 x 10
64	PSS16M	Set Screw M8-1.25 x 10
65	P0537065	Support Post
66	P0537066	Locking Knob M6-1 x 17
67	P0537067	Chuck Guard
68	P0537068	Hex Bolt M3-.5 x 22
69	PLW09M	Lock Washer 3mm
70	P0537070	Blade
71	PRP14M	Roll Pin 3 x 6mm
72	P0537072	Table Insert
73	PS17M	Phlp Hd Scr M4-.7 x 6
74	PS07M	Phlp Hd Scr M4-.7 x 8
75	P0537075	Upper Rocker Arm Guard
76	P0537076	Lower Rocker Arm Guard
77	P0537077	Switch Box
78	P0537078	Speed-Adjustment Label
79	P0537079	Speed-Adjustment Knob
80	P0537080	Switch Plate
81	P0537081	Switch
82	PHTEK10M	Tap Screw M4-.7 x 11
84	P0537084	Plug
85	P0537085	Strain Relief
86	P0537086	Blade Guard
87	P0537087	Hex Bolt M6-1 x 80
88	P0537088	Back Rocker Arm Guard
90	PW03M	Flat Washer 6mm
91	P0537091	Upper Connecting Block
92	P0537092	Knurled Nut M6
93	P0537093	Disconnect Power Label
94	P0537094	Rubber Foot
95	P0537095	Blade Tensioning Label
96	P0537096	Circuit Board
97	P0537097	Switch Box Cover
98	P0537098	Read Manual Warning
99	P0537099	Respirator/Safety Glasses Warning